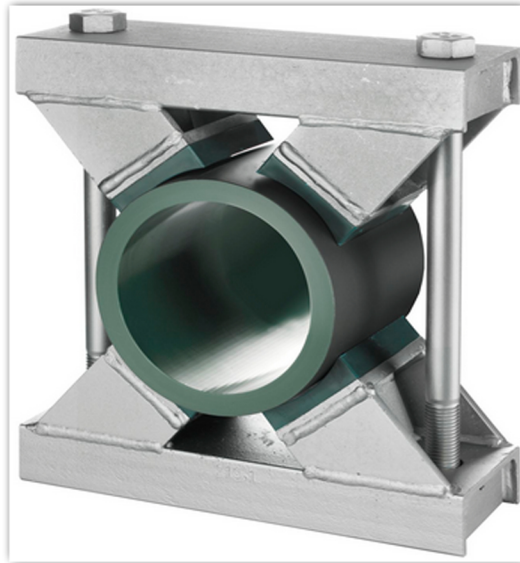


Construction Series Clamps



Pipe OD D1 (mm) D1 (inch)	L1 (in mm) (in inch)	L2 (in mm) (in inch)	H3 (in mm) (in inch)	B1 (in mm) (in inch)	Hexagon Head Bolt	Number of Plastic Pads
220 to 275 8.66" to	420 16.54"	330 12.99"	75 3"	150 6"	M30 x 420	4
276 to 325 12.83" to	460 18.11"	370 14.57"	75 3"	150 6"	M30 x 460	4
326 to 370 12.83" to	510 20.08"	420 16.53"	75 3"	150 6"	M30 x 500	4
371 to 425 14.61" to	570 22.44"	480 18.89"	75 3"	150 6"	M30 x 560	4
426 to 485 16.77" to	620 24.41"	530 20.87"	75 3"	150 6"	M30 x 590	4
486 to 550 19.13" to	680 26.77"	590 23.23"	75 3"	150 6"	M30 x 720	4
551 to 630 21.69" to	760 29.92"	670 26.38"	75 3"	150 6"	M30 x 800	5
631 to 715 24.84" to	845 33.27"	755 29.72"	75 3"	150 6"	M30 x 884	5
716 to 800 28.19" to	940 37.00"	850 33.46"	75 3"	150 6"	M30 x 970	5